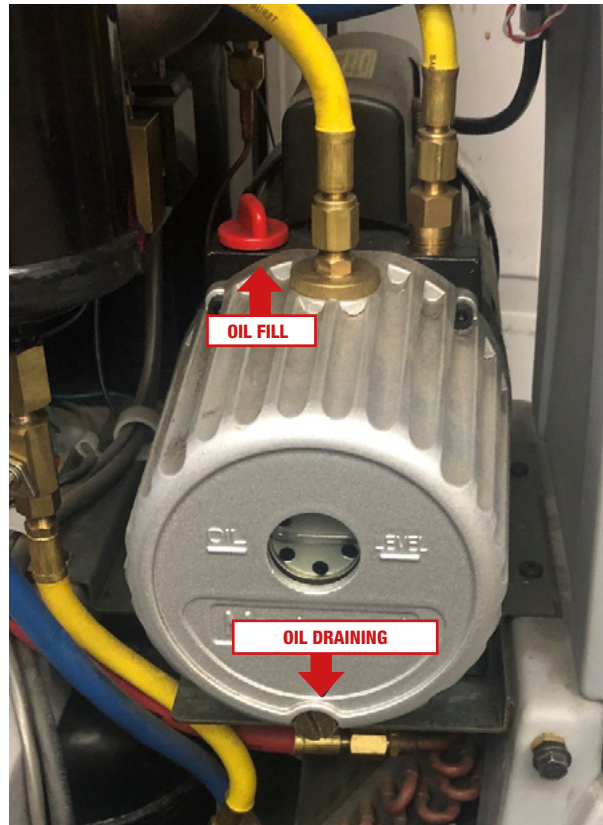


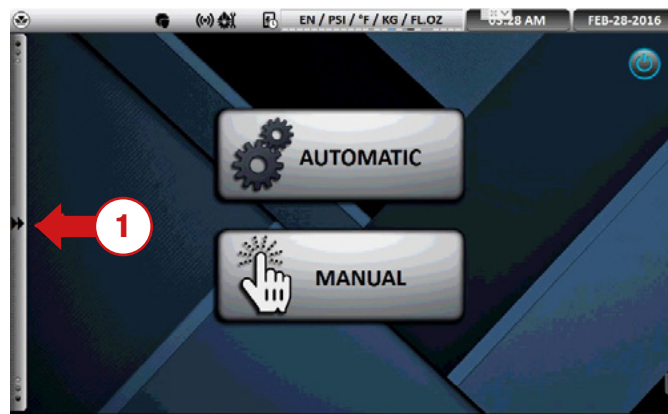


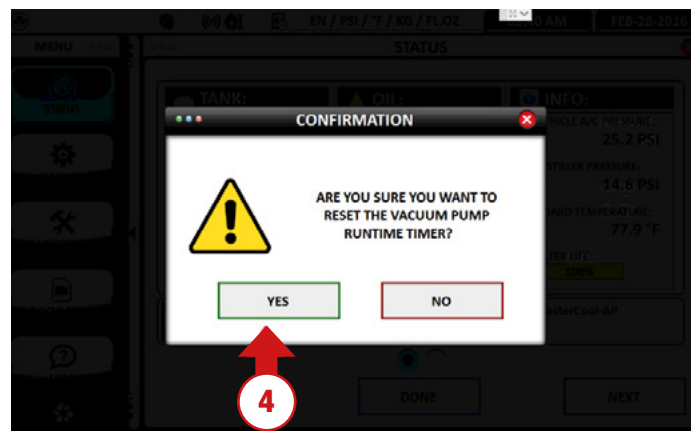
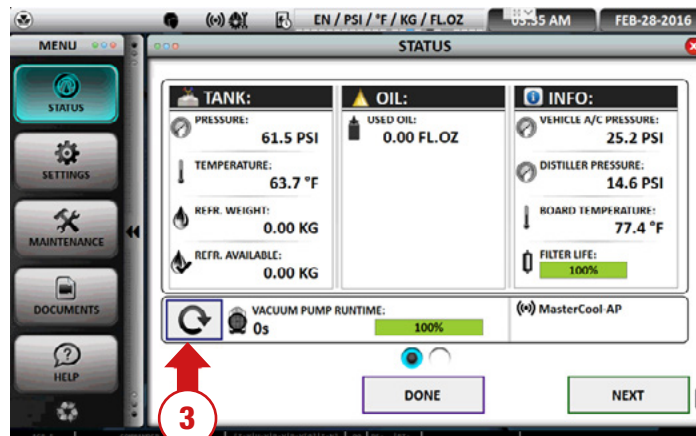
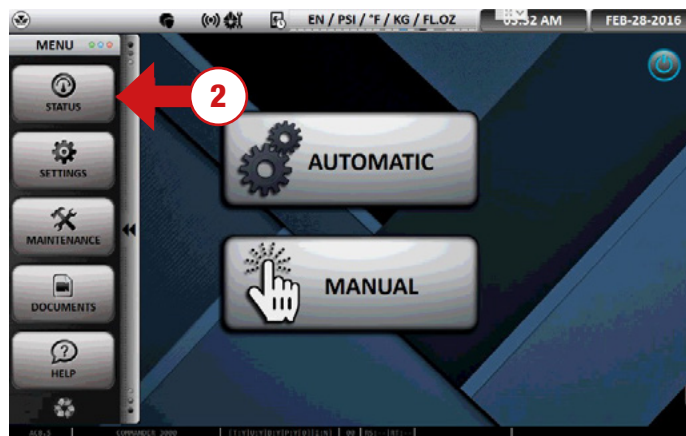
**Mastercool<sup>®</sup> Inc.**  
"World Class Quality"

## OIL CHANGE PROCEDURE FOR COMMANDER R/R/R MACHINES



- To drain the oil, twist off the screw pointed at the oil draining port. After the oil is drained re-tighten the screw.
  - To fill the pump with oil, unscrew the lid pointed at the filling port. Fill the pump until the oil level reaches the mark that is on the pump.
- NOTE:** The oil needed is deep vacuum pump oil (viscosity (cSt) @ 40°C is 46 +/-10%.)
- To reset the vacuum pump timer, follow the steps on the pictures below.





For further questions, please contact Mastercool (973-252-9119) and ask to speak with Tech Support.