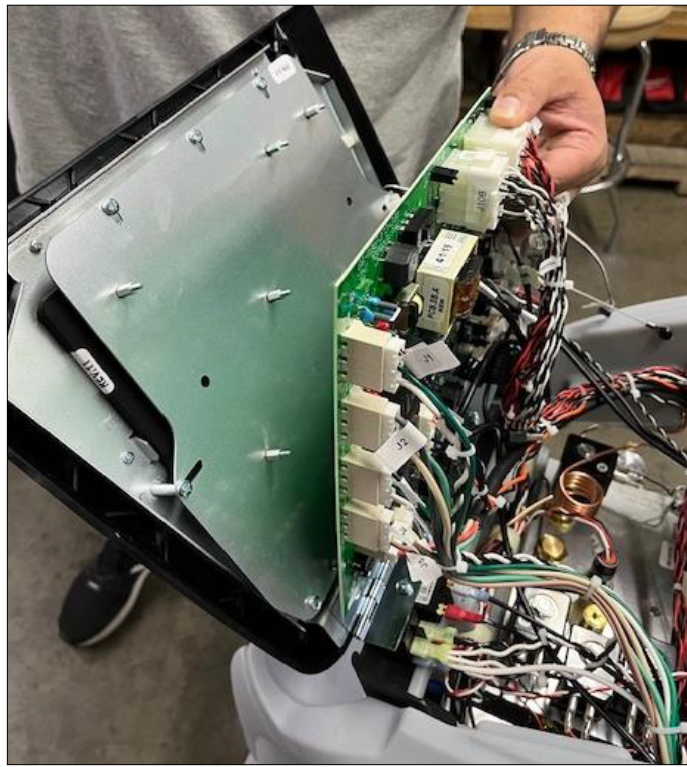


PICTURE 1 – CONNECTION LOCATIONS

CAUTION – UNPLUG THE POWER CORD BEFORE REMOVING PC BOARD.

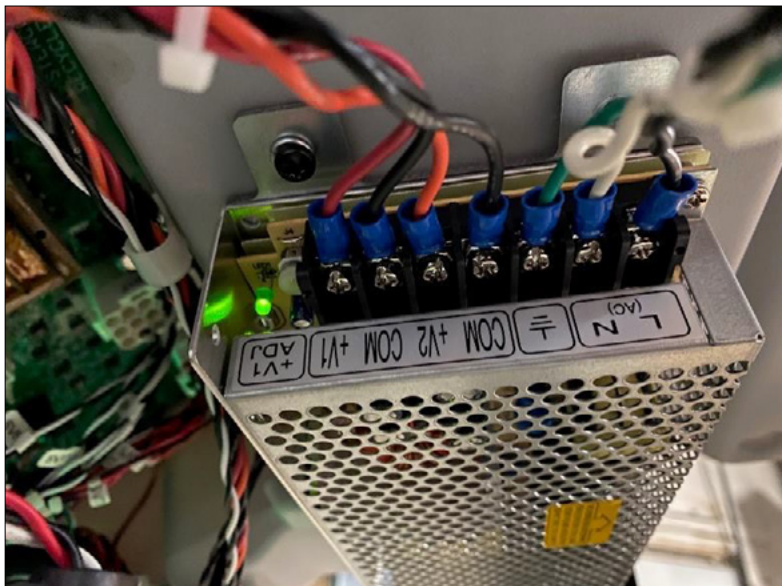
See picture 1 for locations of nuts, wire locations and hinge screw locations.

1. Disconnect wire to tablet plugged into socket J6.
2. Disconnect USB cable to the tablet. Note the location of the USB socket.
Note: The USB cable for the 8" tablet will not work with the 10" tablet.
3. Disconnect audio connection, if used.
4. PC board mounting stud locations circled in yellow. Remove nuts (5.5 mm) from screws.
5. Note that some of the studs are circled in red. Those studs have insulation washers under the nuts. Remove the nuts and be sure and save the washers.
6. Gently pull PC board and wires away from screws and lay it back on the machine. See picture 2.

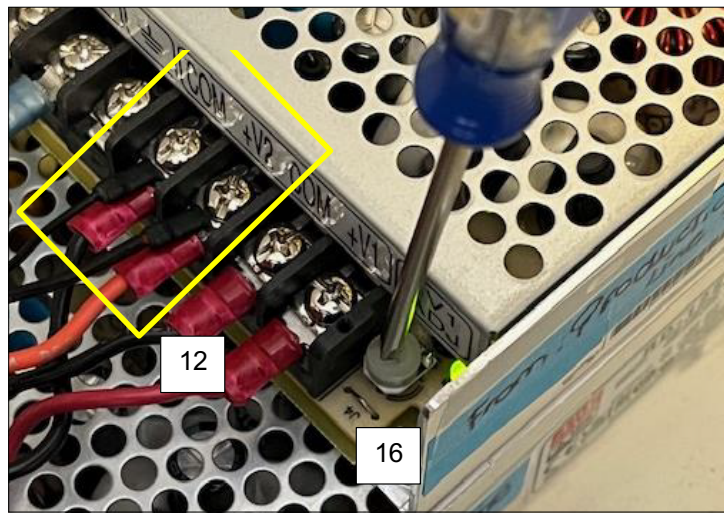


PICTURE 2 - STEPS 6 AND 10

7. Remove screws from hinge.
8. Remove front face with mounted tablet.
9. Install new front panel with tablet. Check alignment of face with machine before tightening screws.
10. Install PC board back on studs and put nuts back on. Remember to put the insulating washers under the nuts with the red circles.
11. Remove the back cover of the machine. Remove the three screws on the sides of the back cover and the two screws under the handle. Lift the panel while tilting it back. Leave the power wire connected to the back cover and rotate the cover out of the way.
12. Install the included tablet power wires onto the power supply. The power supply is located under the handle inside of the machine. Route the wire from the PC board to the power supply under the back cover. Install the red wire to the V2+ terminal and the black wire to a COM terminal of the power supply. See pictures 3 and 4.

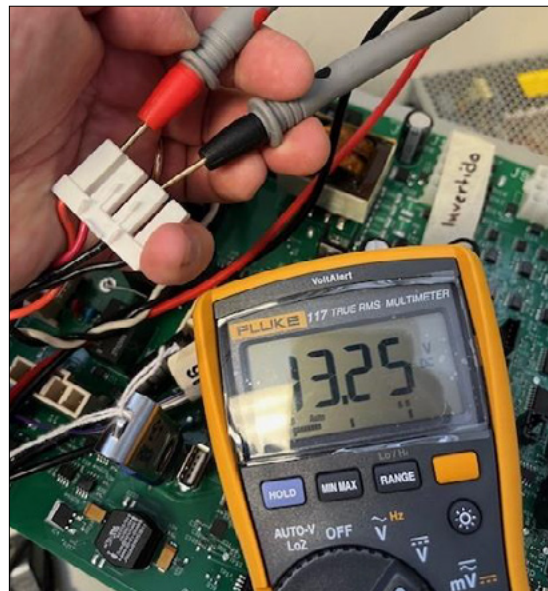


PICTURE 3 - POWER SUPPLY LOCATED UNDER THE HANDLE



PICTURE 4 - STEP 12 WIRES CONNECTED TO +V2 AND COM ON THE POWER SUPPLY.
STEP 16 - ADJUSTMENT SCREW FOR VOLTAGE ADJUSTMENT.

13. Unplug low voltage connector J24, from the PC board.
14. Using extreme caution to avoid touching any wire connections, plug the machine in and turn it on.
15. CAUTION – DO NOT PLUG THE TABLET POWER PLUG INTO THE TABLET. Do the voltage adjustment first or the tablet can be damaged. Put the leads of a voltmeter set on DC into the J24 connector as shown in picture 5. The voltage should read about 12V.



PICTURE 5 - PINS TO CHECK THE VOLTAGE OUTPUT OF THE POWER SUPPLY.

16. Using a small screwdriver, adjust the voltage output of the power supply to 13.25V. The adjustment screw is on the power supply between the terminal strip and the green power light. See Picture 4.
17. Turn the machine off and unplug it.
18. Plug the low-voltage connector back into socket J24 the PC board.
19. Replace the back panel.
20. Plug the USB cord from the tablet into the same position on the PC board as the old one.
21. If there is a wire connected to the tablet with a connector on it (future models may not require this wire), plug it into the PC board in the same J6 location as the old tablet.
22. Plug the power wire into the socket on the tablet.
23. There is not an audio connection on the new tablet.
24. Make sure all the wires are secure and close the top panel.
25. Replace the screws on the top panel and the machine is ready to use.