

USB Virtual COM Driver Installation Guide

Thank you for using our product .

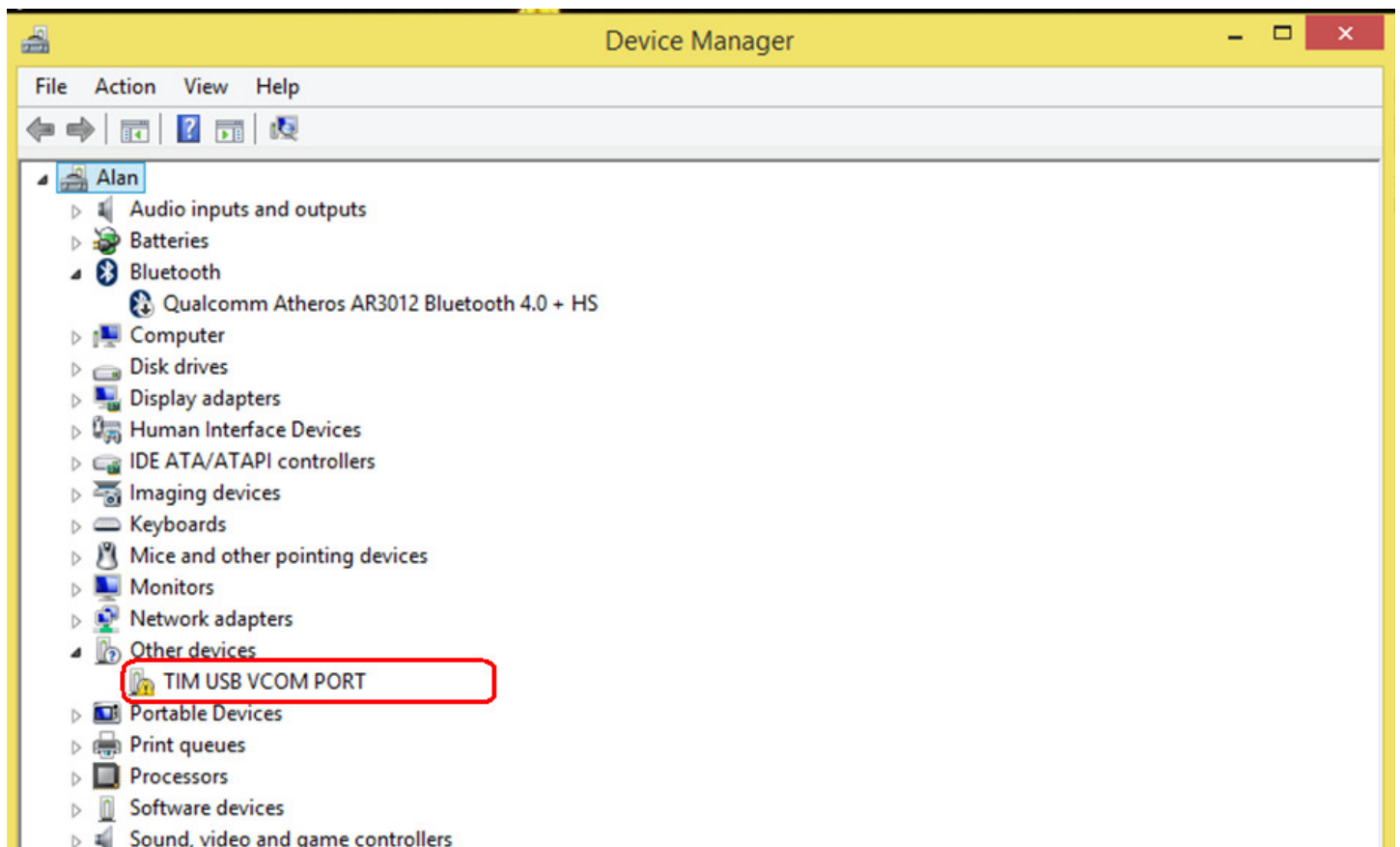
Please read this installation guide before installing the USB Virtual Com driver into your PC.

Before we get to the verification we need to install the Virtual COM port drivers needed for the Thermal Imager(NXP LPC17XX-Xplorer USB port) to appear as a Virtual COM port. Fortunately, this is a one-time setup and fairly simple. On a Windows machine the user needs to point to the location of the INF file (the INF file can be found in the disk and download folder provide on product registration).

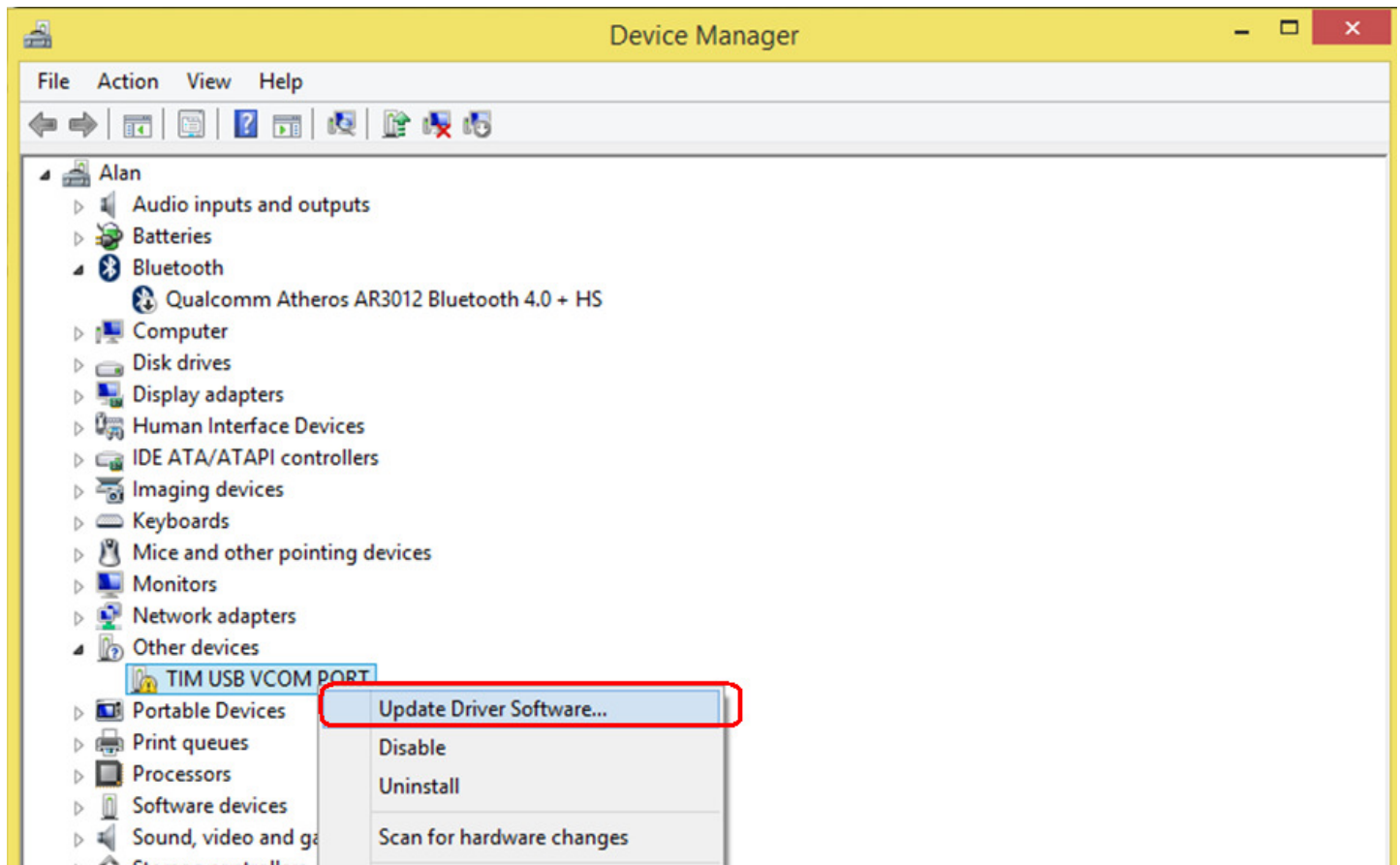
<http://www.lpcware.com/content/nxpfile/lpcopen-software-platform-usbd-library-drivers-windows>

Steps to install the VCOM drivers on Windows 8.1(Compatibility 2000/XP/7/8...) machine:

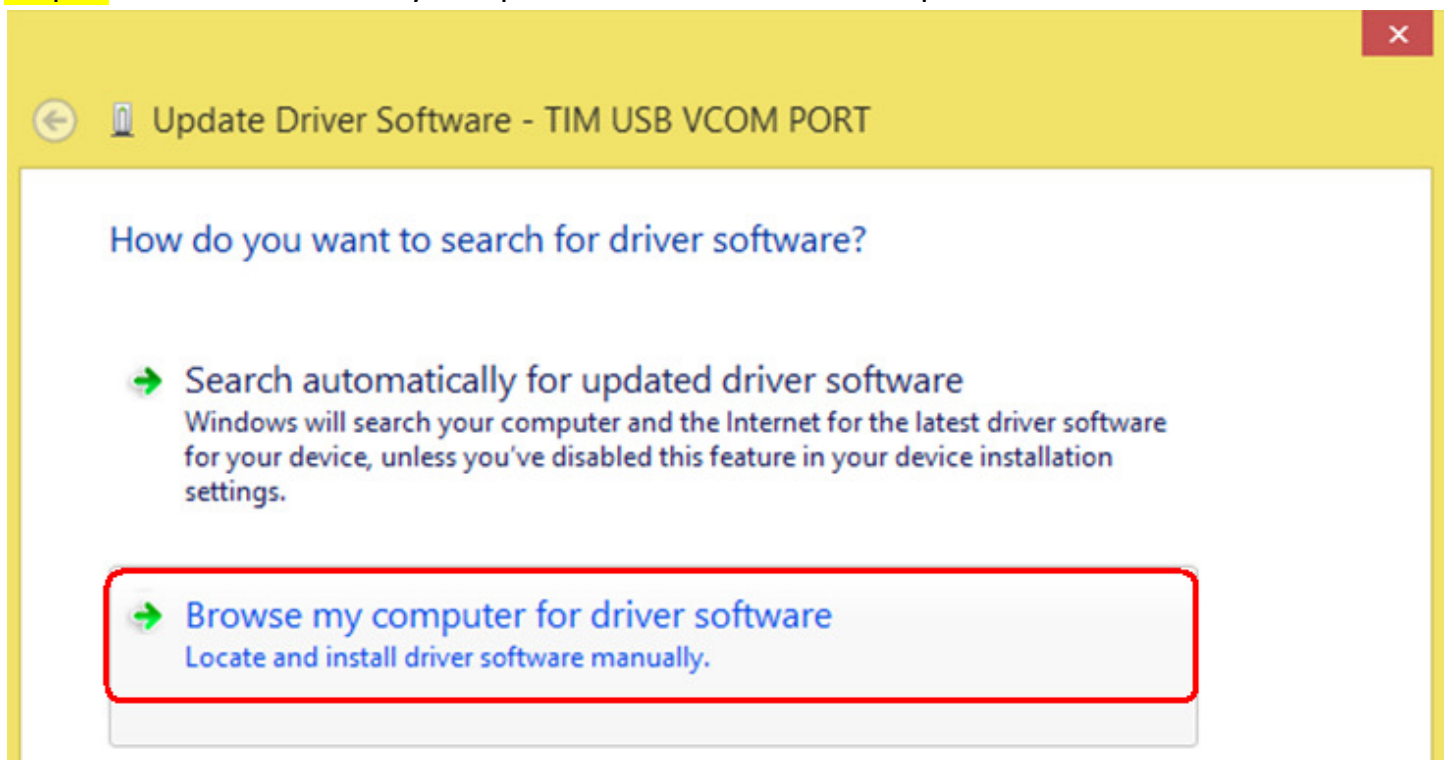
Step 1: Connect USB to the computer, Open Device Manager, You can find "TIM USB VCOM PORT" new device listed under "Other device".



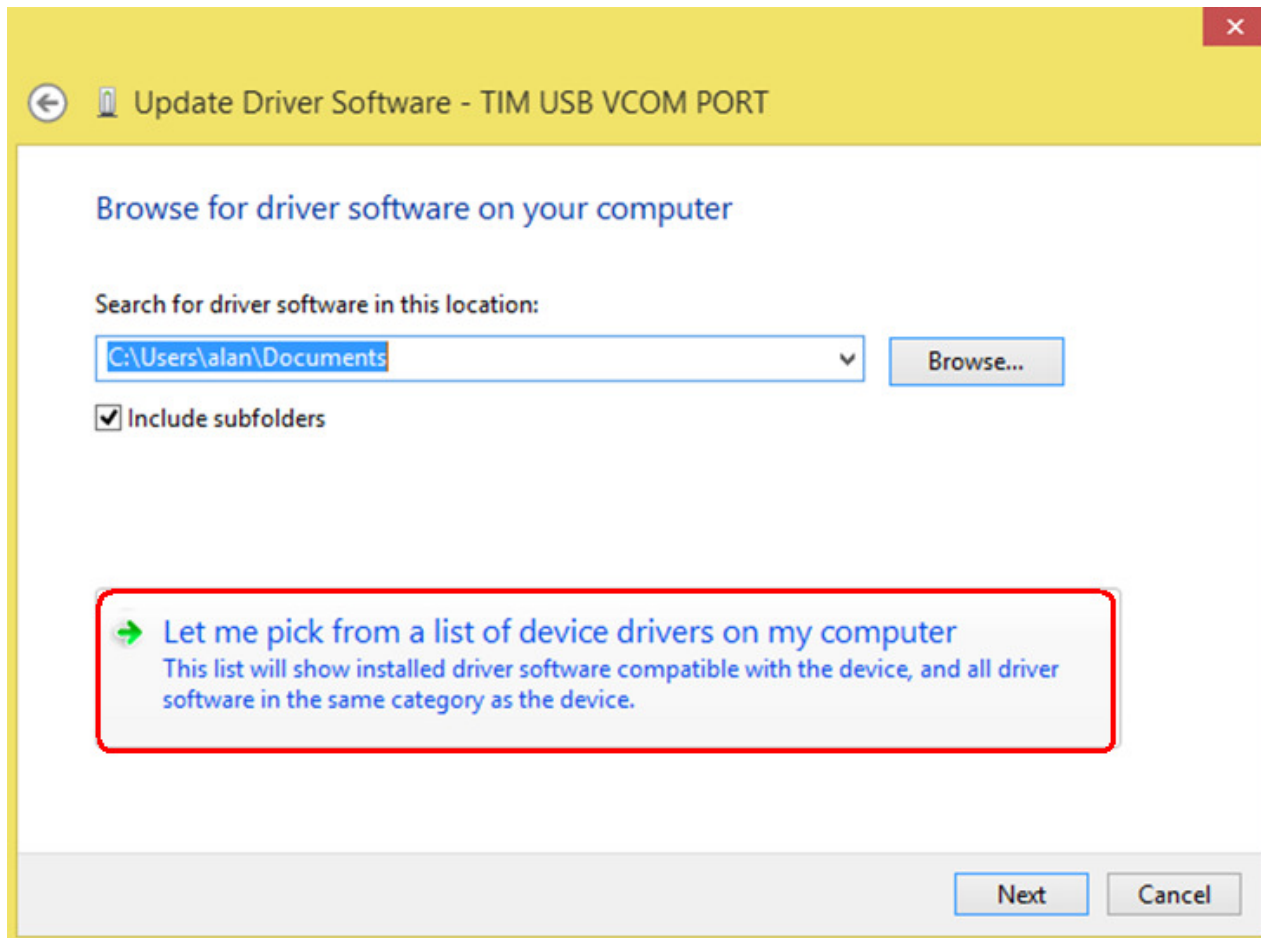
Step 2: Choose the "Update Driver Software" option.



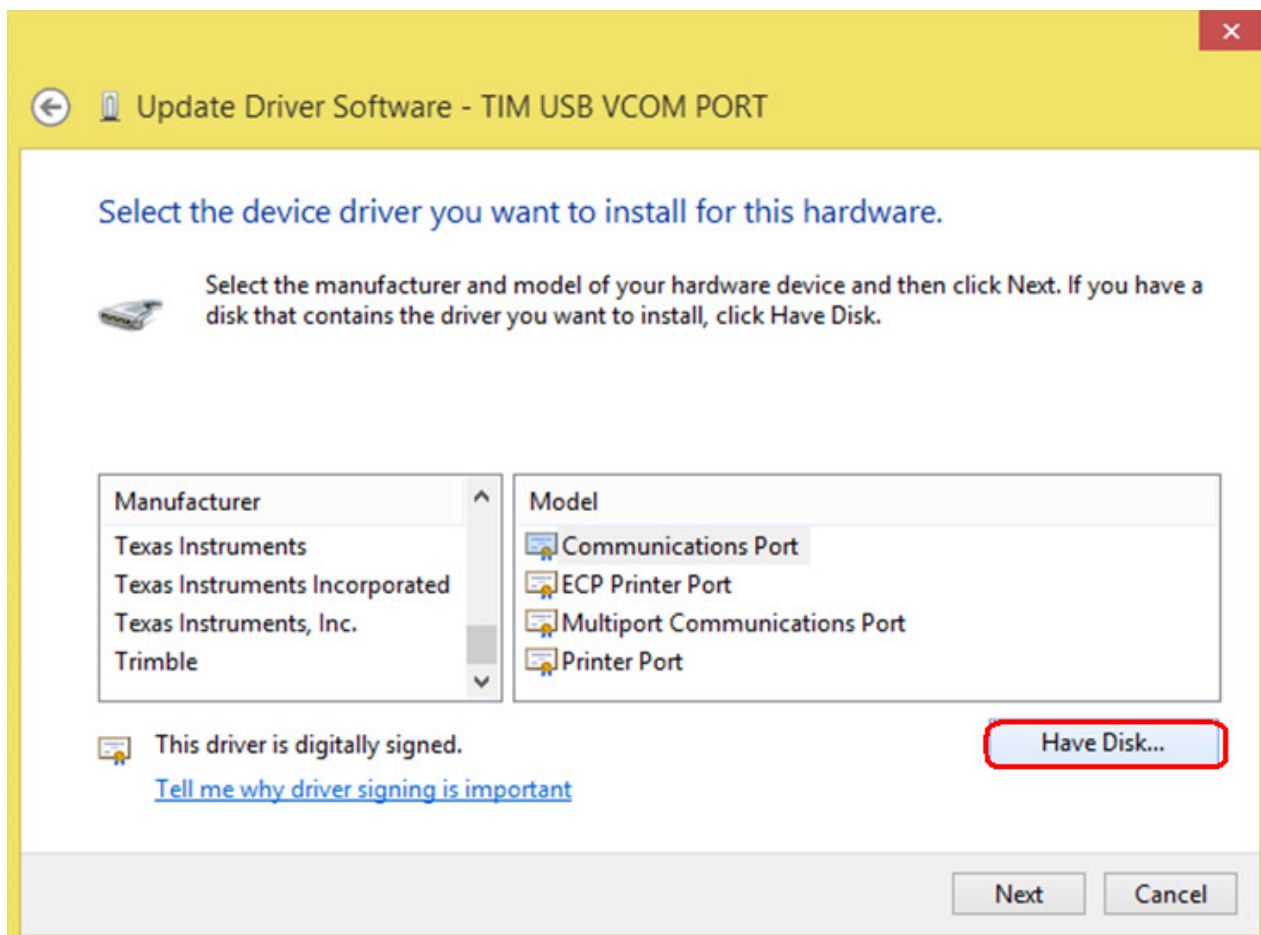
Step 3: Click on "Browse my computer for driver software" option.



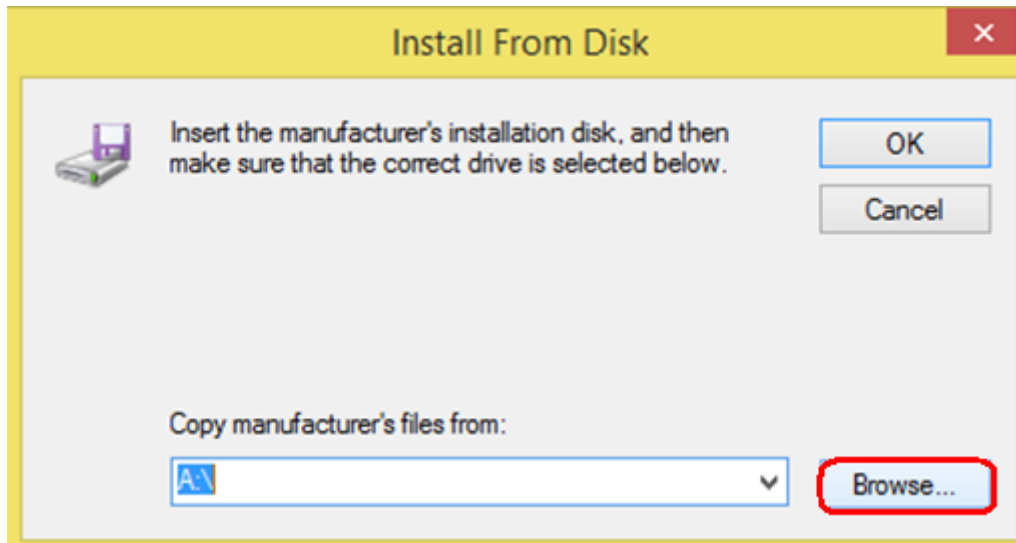
Step 4: Click on "Let me pick from a list of device drivers on my computer" option.



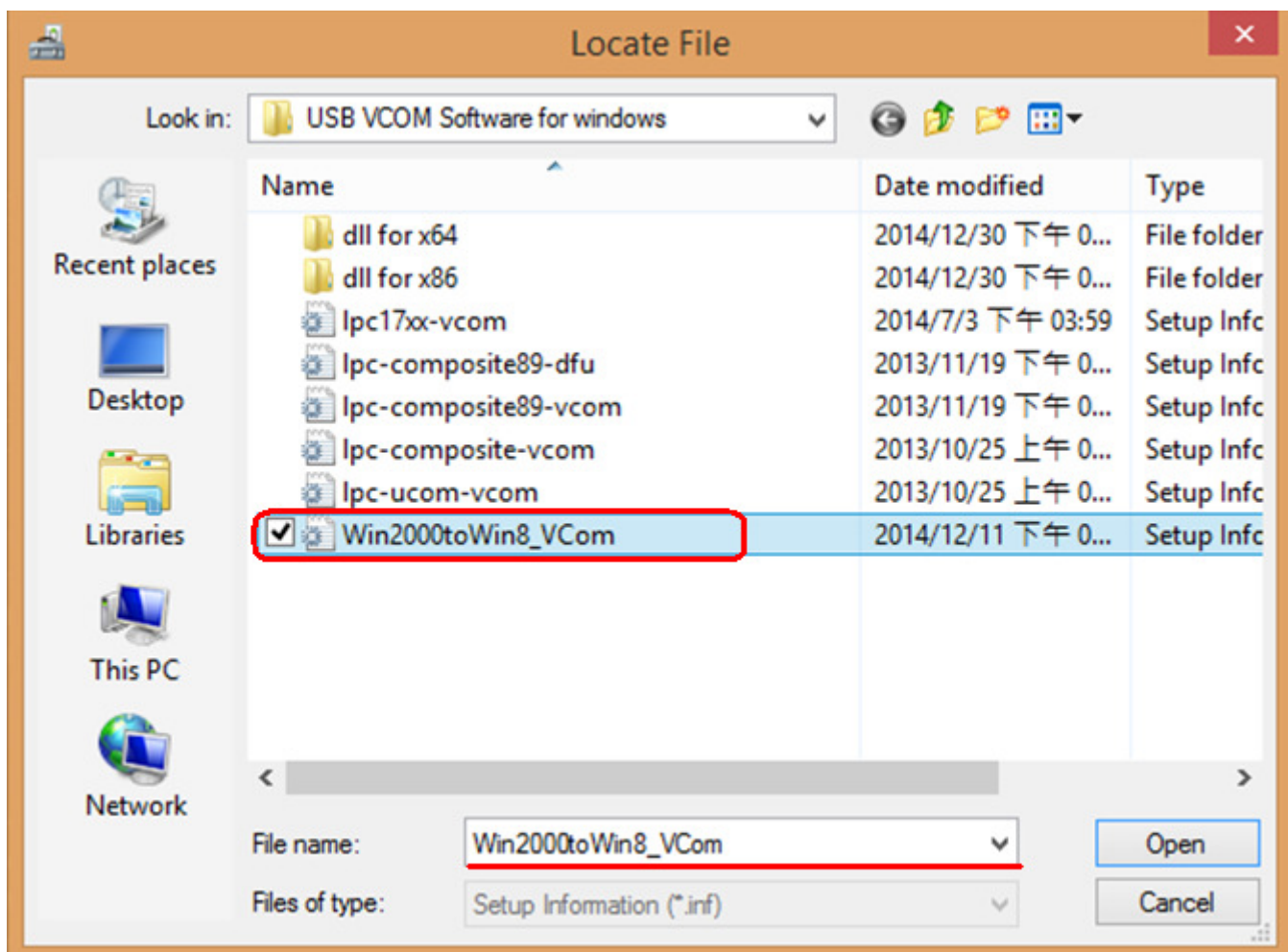
Step 5: Click on "Have Disk..." option.



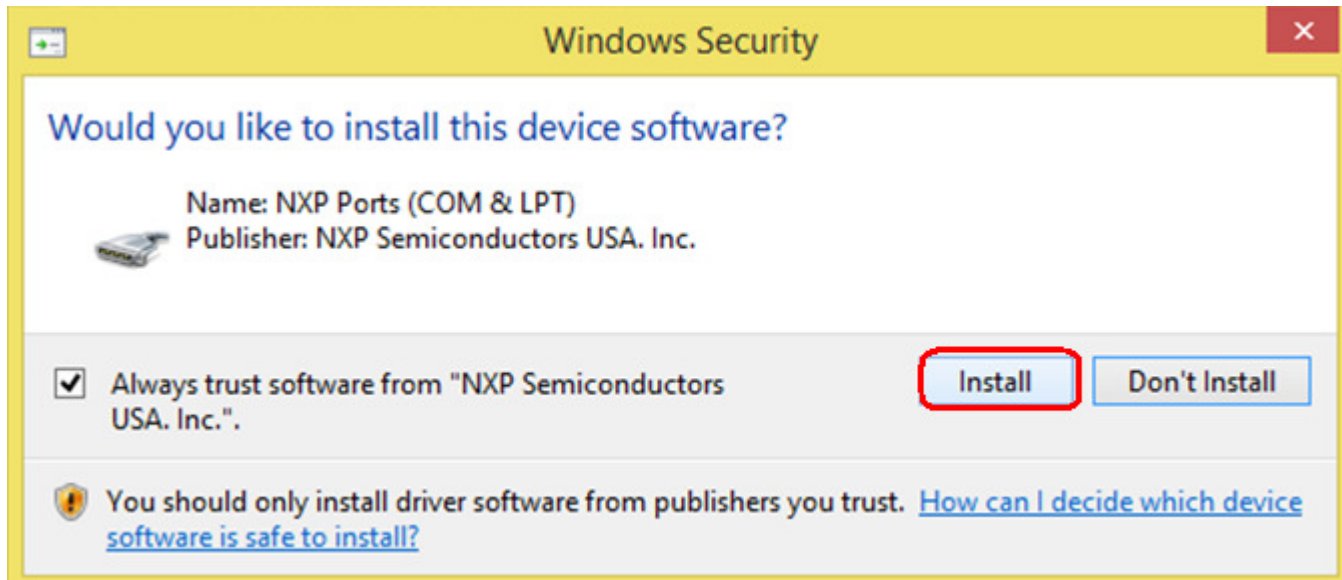
Step 6: Click on "Browse" option.



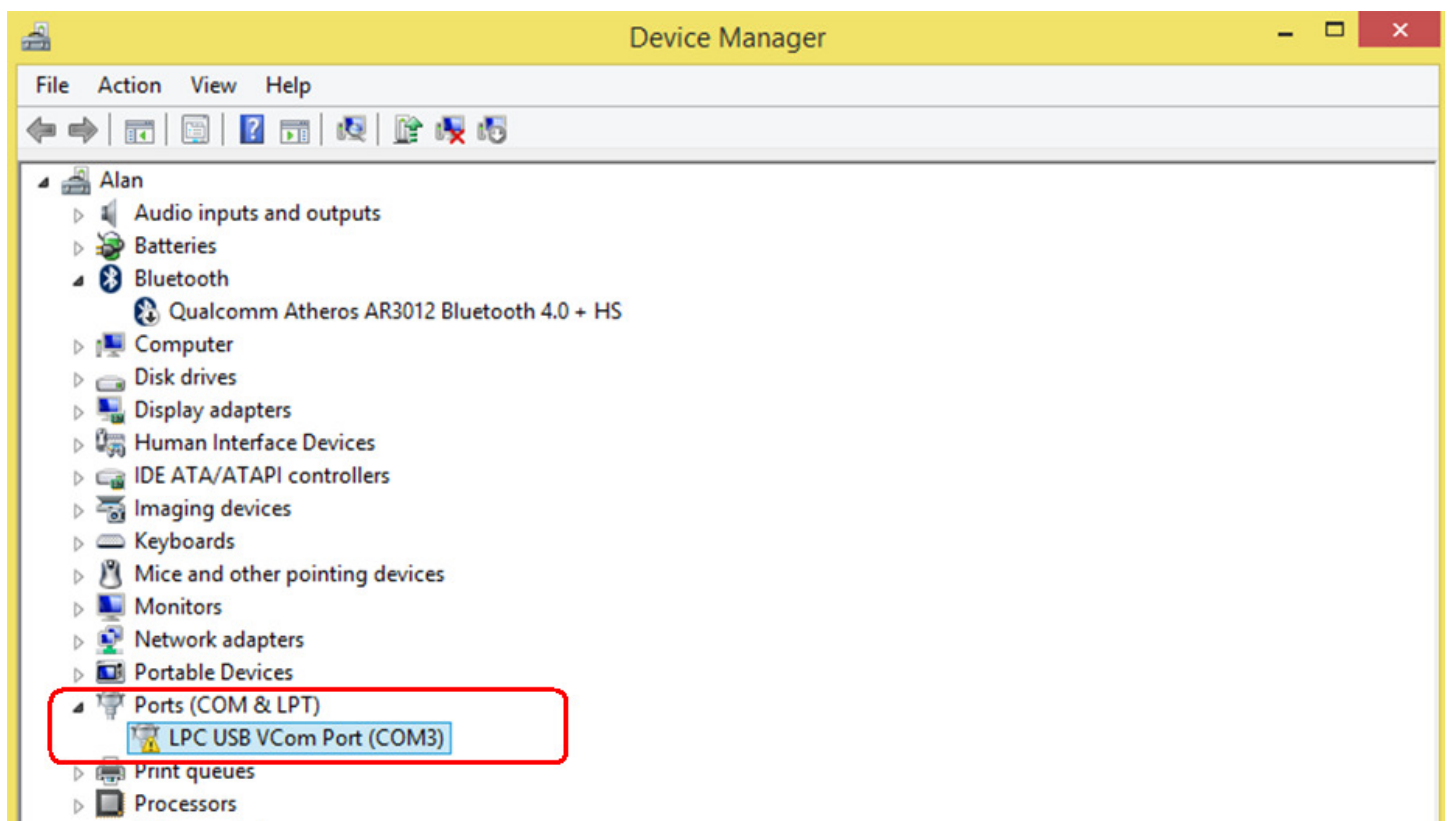
Step 7: Choose the "INF file".



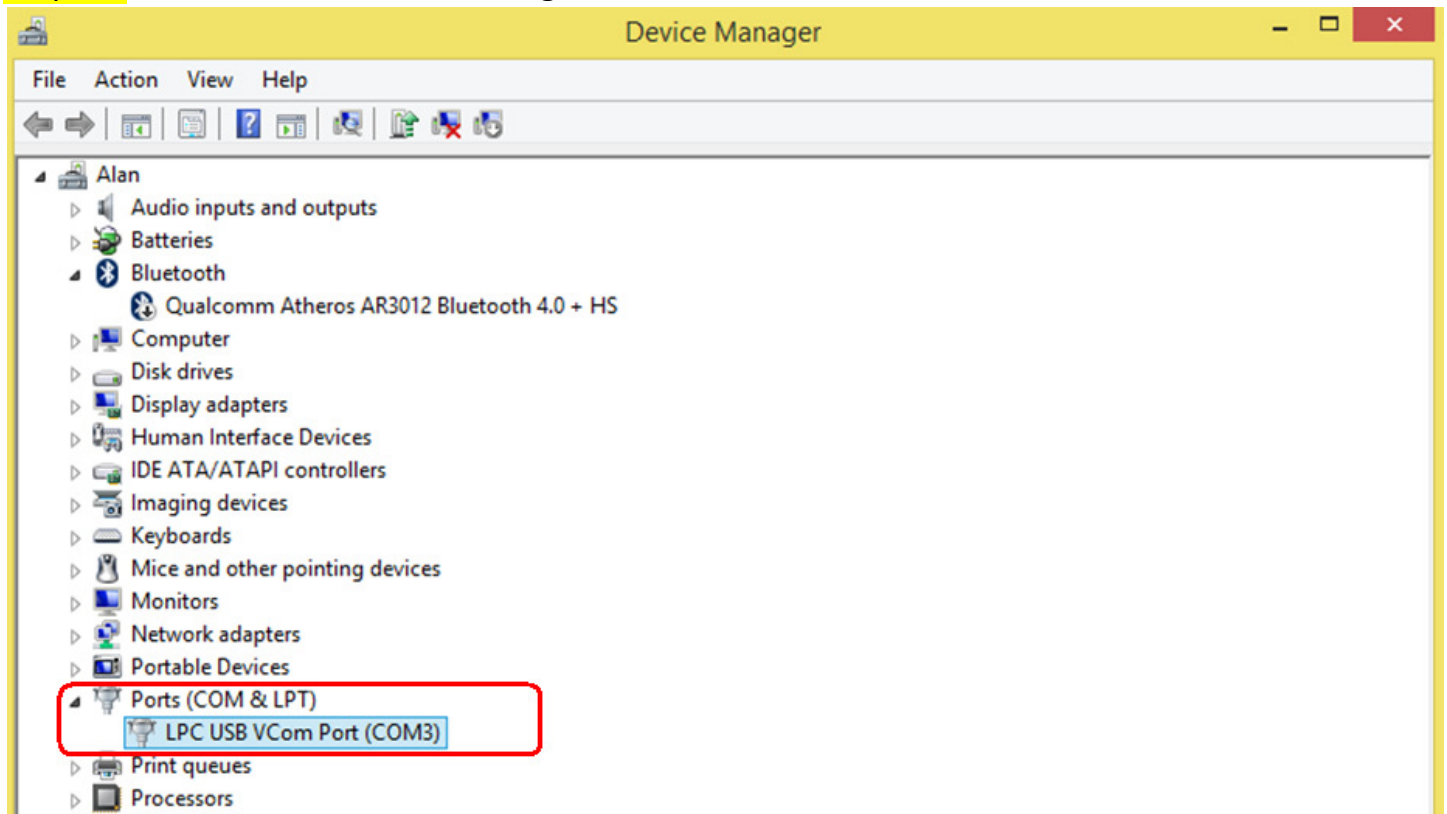
Step 8: Click on "Install" option.



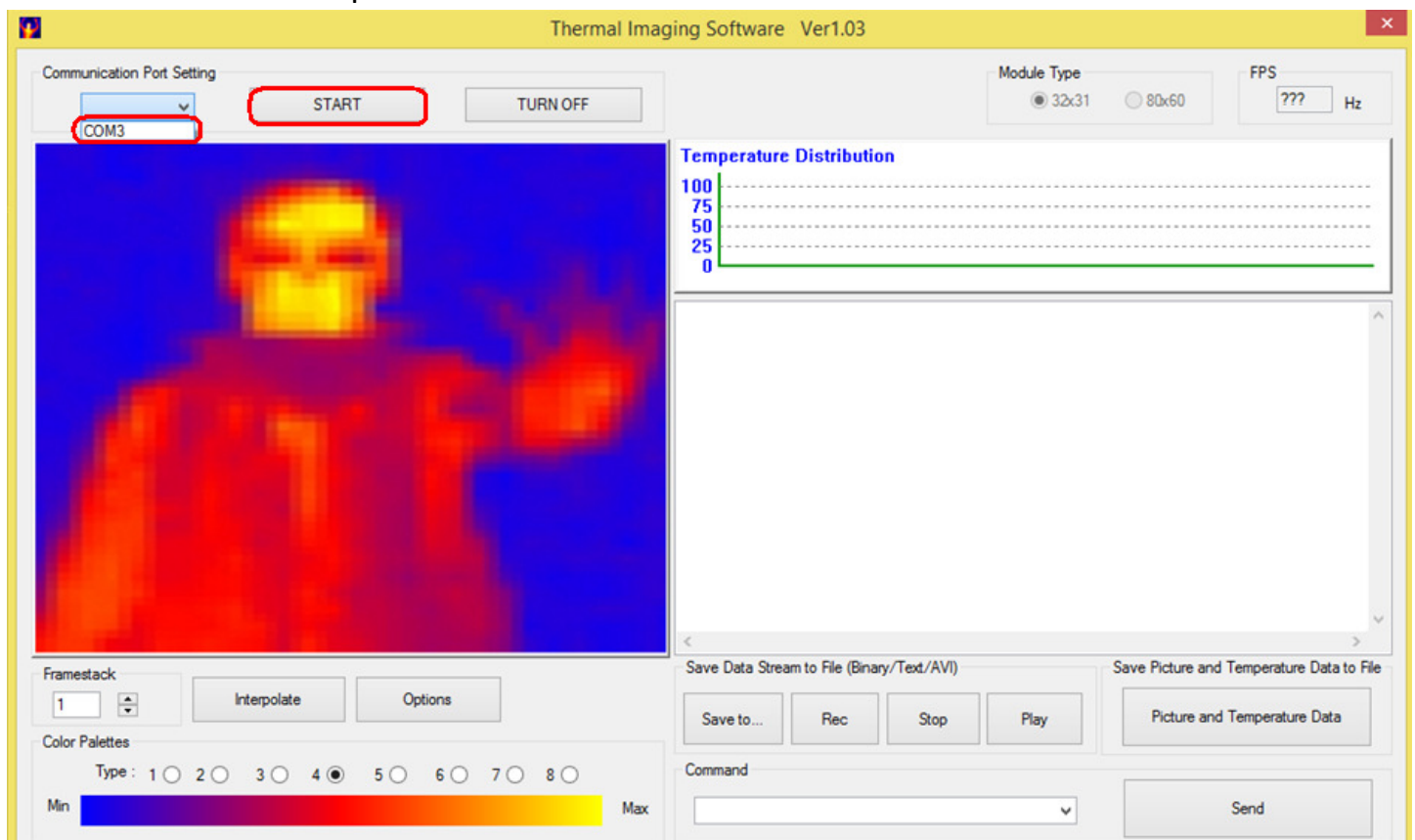
Step 9: Now LPC USB VCom Port (COM3) is ready to use.



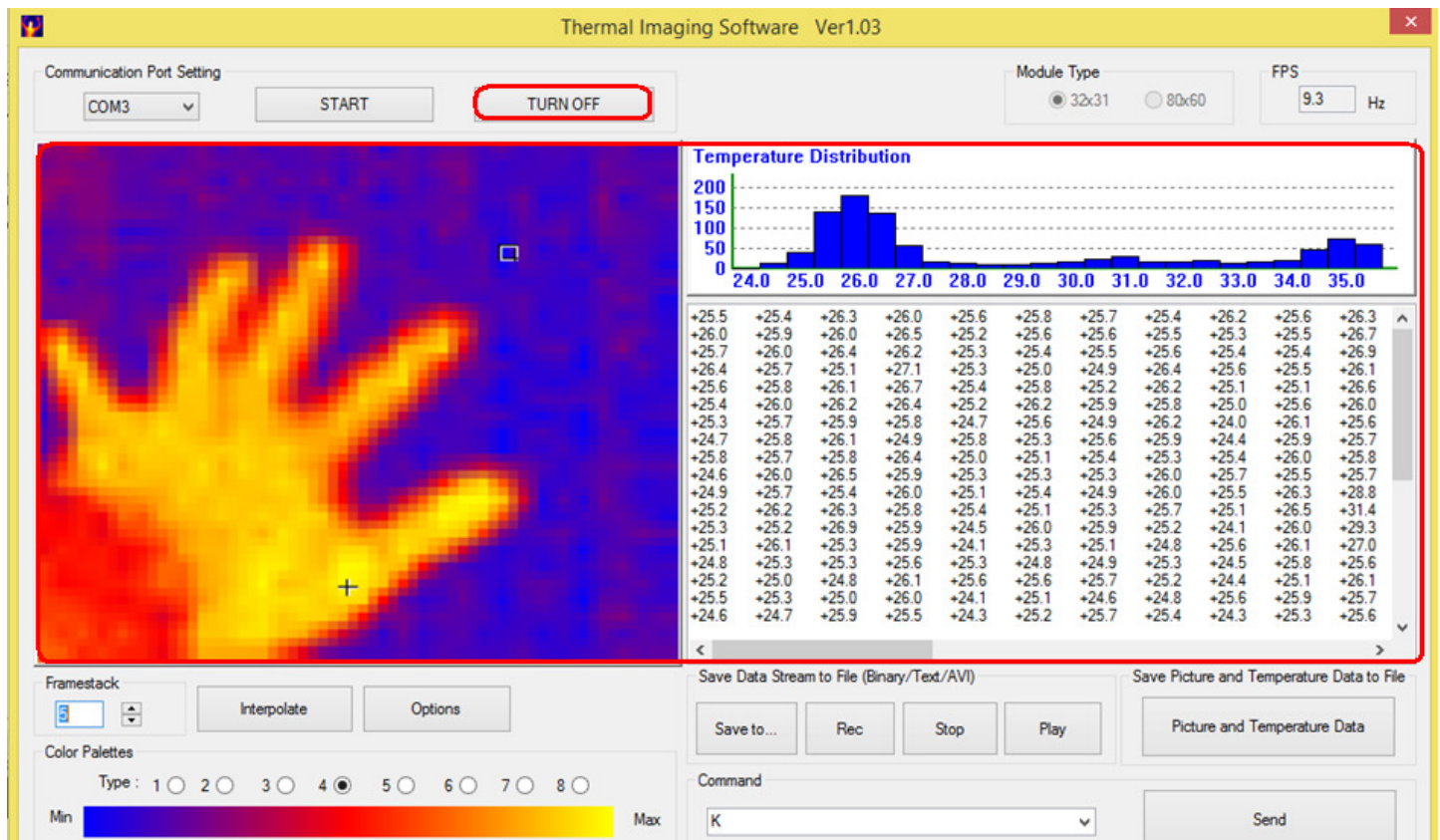
Step 10: Power on the Thermal Imager then PC can catch this device.



Step 11: Open the Thermal Imaging Software.
Choose COM3 port and Click on "START" button.



Step 12: Now the Thermal Imager is ready to use.



Note: The Virtual COM is listed under the device manager. Please note that the COM port list under the Device Manager is automatically updated with the COM port number for the Virtual COM. On our test machine we see COM ports listed but we suggestions priority to use COM1~ COM9.